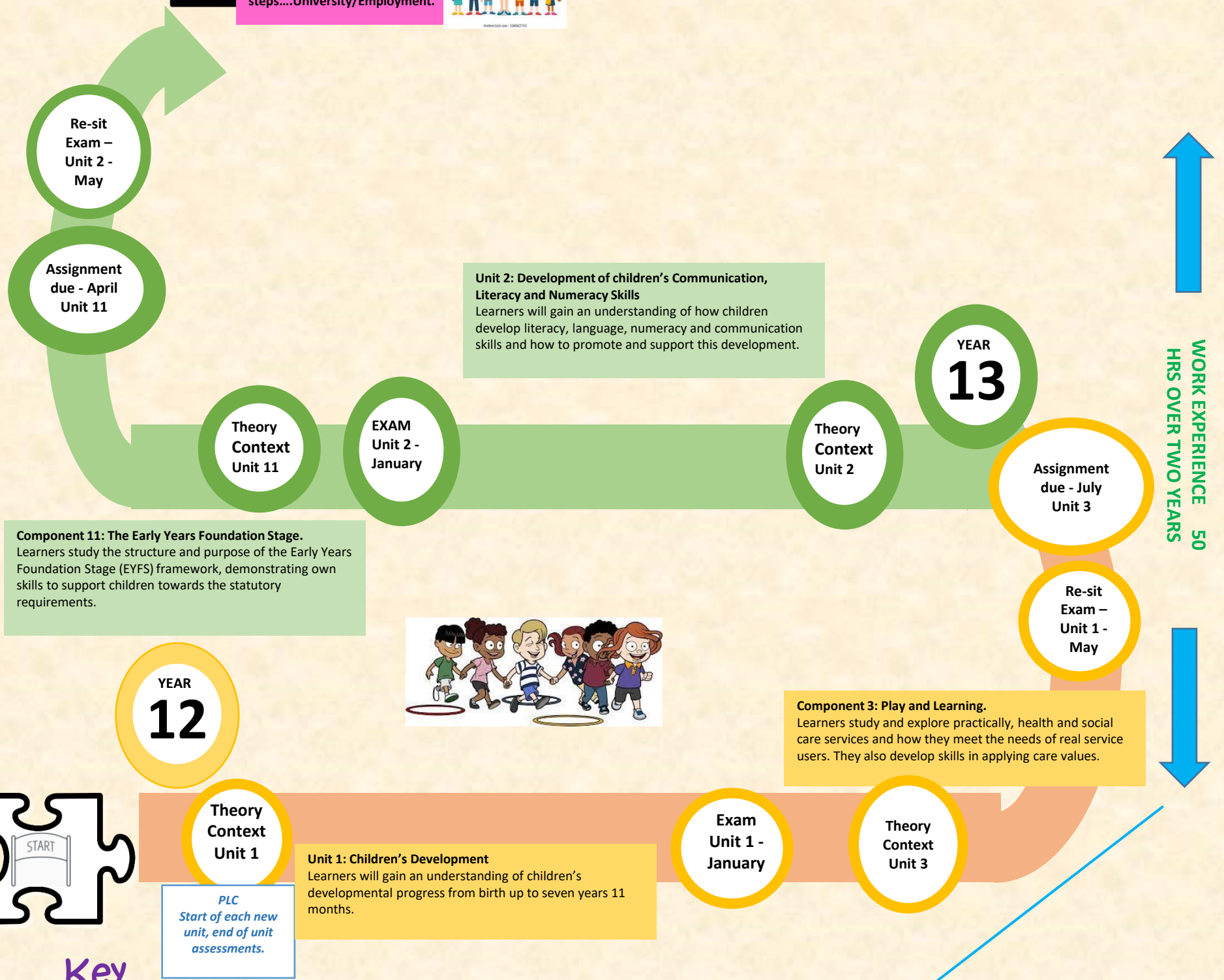


Children's Play, Learning and Development



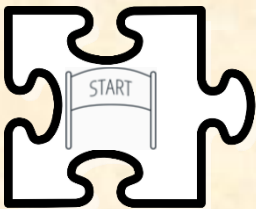
Next steps...University/Employment.



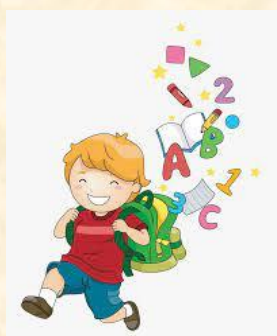
Component 11: The Early Years Foundation Stage.
Learners study the structure and purpose of the Early Years Foundation Stage (EYFS) framework, demonstrating own skills to support children towards the statutory requirements.



Component 3: Play and Learning.
Learners study and explore practically, health and social care services and how they meet the needs of real service users. They also develop skills in applying care values.



Key Stage 5
BTEC L3



Work Placement Requirements		
Qualification	Minimum Length	Setting requirements
Pearson BTEC Level 3 National Extended Certificate in Children's Play, Learning and Development	50 hours	At least one setting, with children from birth to seven years 11 months